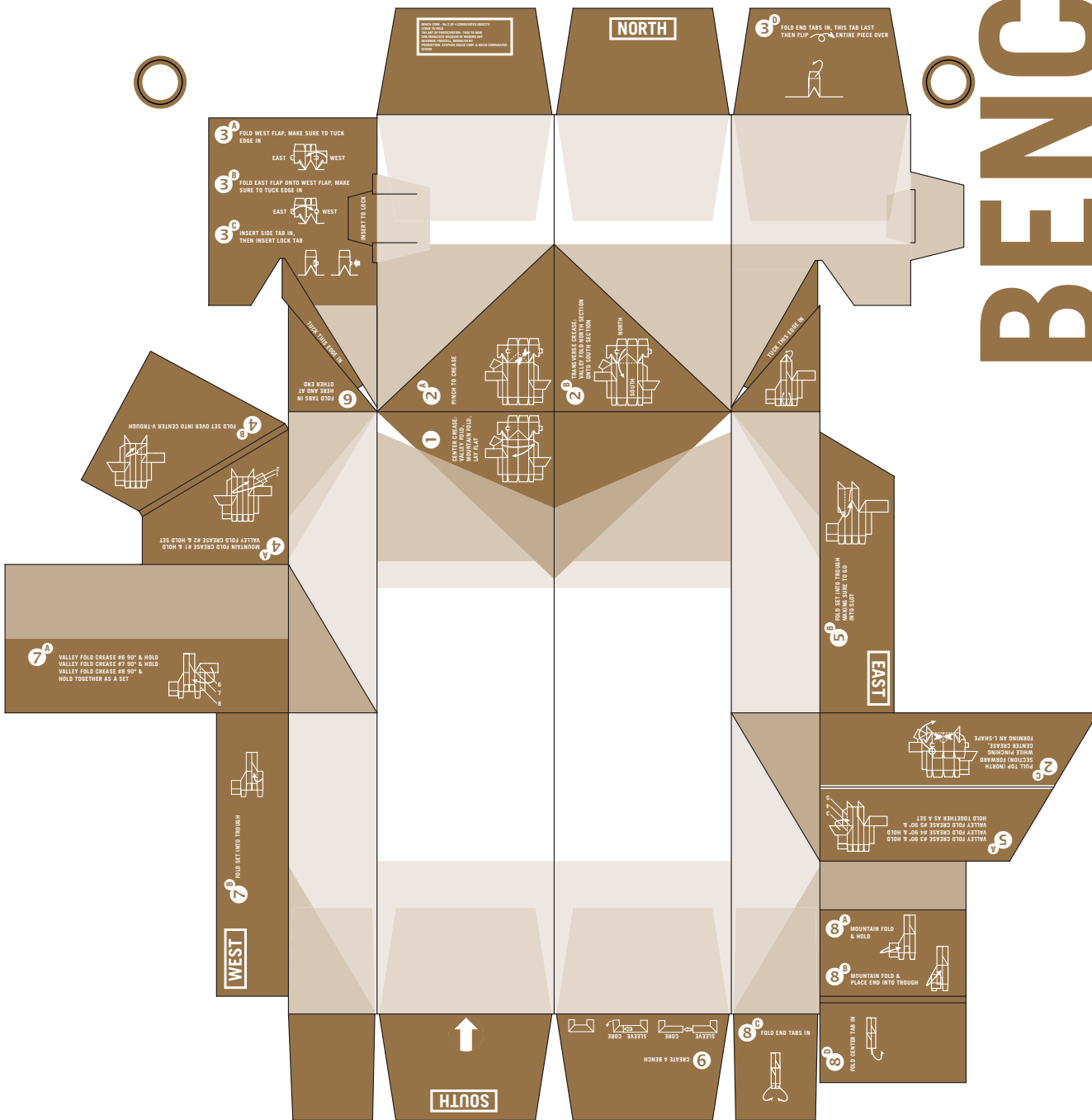


CORE BENCH



BENCH INSTRUCTIONS

- 1** CENTER CREASE: VALLEY FOLD DOWN UNTIL FLAP LAYS FLAT
- 2** CENTER CREASE: VALLEY FOLD DOWN UNTIL FLAP LAYS FLAT
- 3** CENTER CREASE: VALLEY FOLD DOWN UNTIL FLAP LAYS FLAT
- 4** CENTER CREASE: VALLEY FOLD DOWN UNTIL FLAP LAYS FLAT
- 5** CENTER CREASE: VALLEY FOLD DOWN UNTIL FLAP LAYS FLAT
- 6** CENTER CREASE: VALLEY FOLD DOWN UNTIL FLAP LAYS FLAT
- 7** CENTER CREASE: VALLEY FOLD DOWN UNTIL FLAP LAYS FLAT
- 8** CENTER CREASE: VALLEY FOLD DOWN UNTIL FLAP LAYS FLAT
- 9** CENTER CREASE: VALLEY FOLD DOWN UNTIL FLAP LAYS FLAT

TO COMPLETE THE BENCH:

- 6** GATHER A BENCH: SLIDE THE "CORE" INTO THE "SLEEVE"
- 7** GATHER A BENCH: SLIDE THE "CORE" INTO THE "SLEEVE"
- 8** GATHER A BENCH: SLIDE THE "CORE" INTO THE "SLEEVE"
- 9** GATHER A BENCH: SLIDE THE "CORE" INTO THE "SLEEVE"

FOLDING SYMBOLS

- VALLEY FOLD
- MOUNTAIN FOLD
- FOLD OVER
- PUSH
- FLIP OVER
- SLIDE INTO PLACE
- SLIDE INTO PLACE
- SLIDE INTO PLACE
- SLIDE INTO PLACE

TABLE

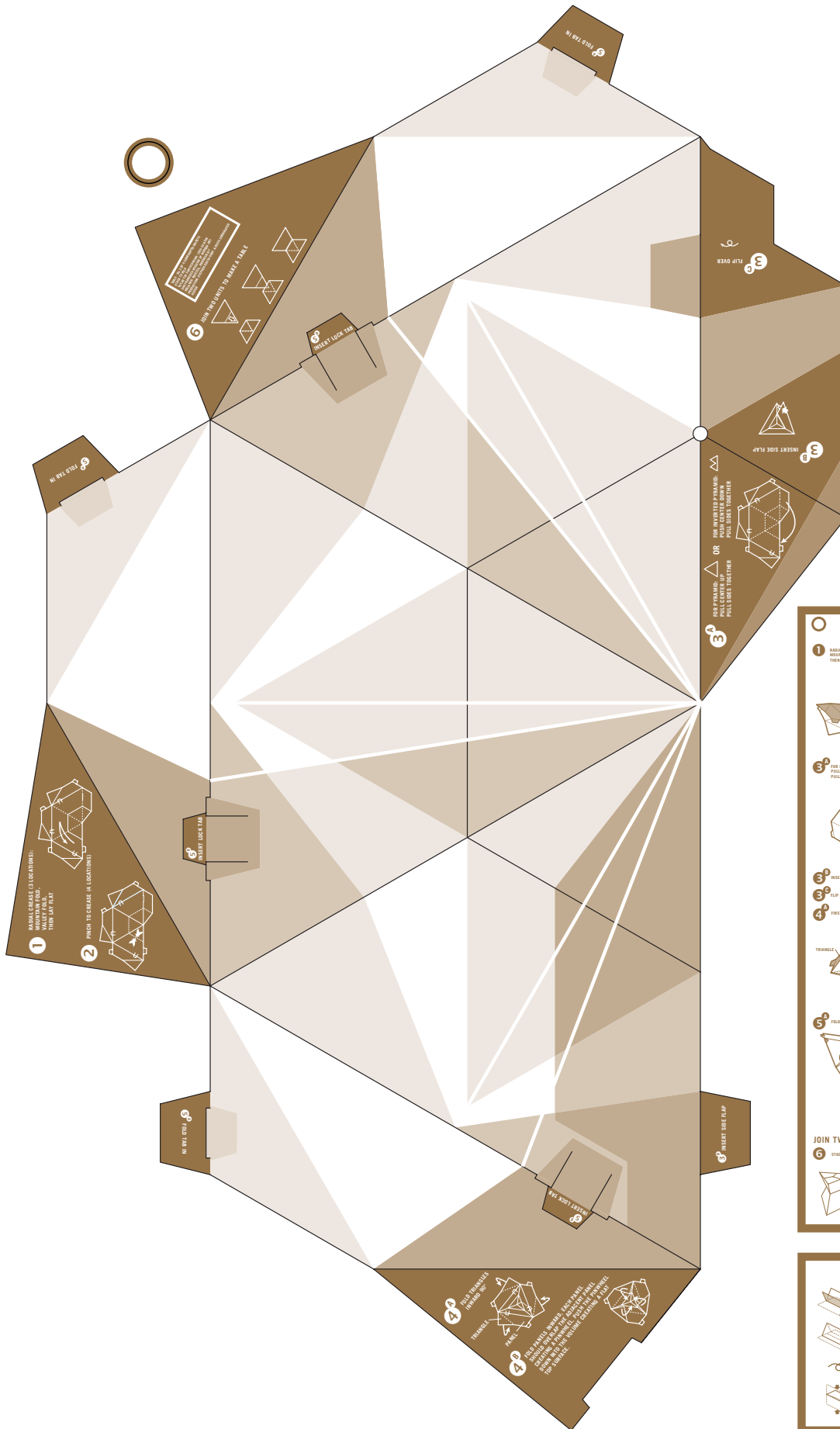
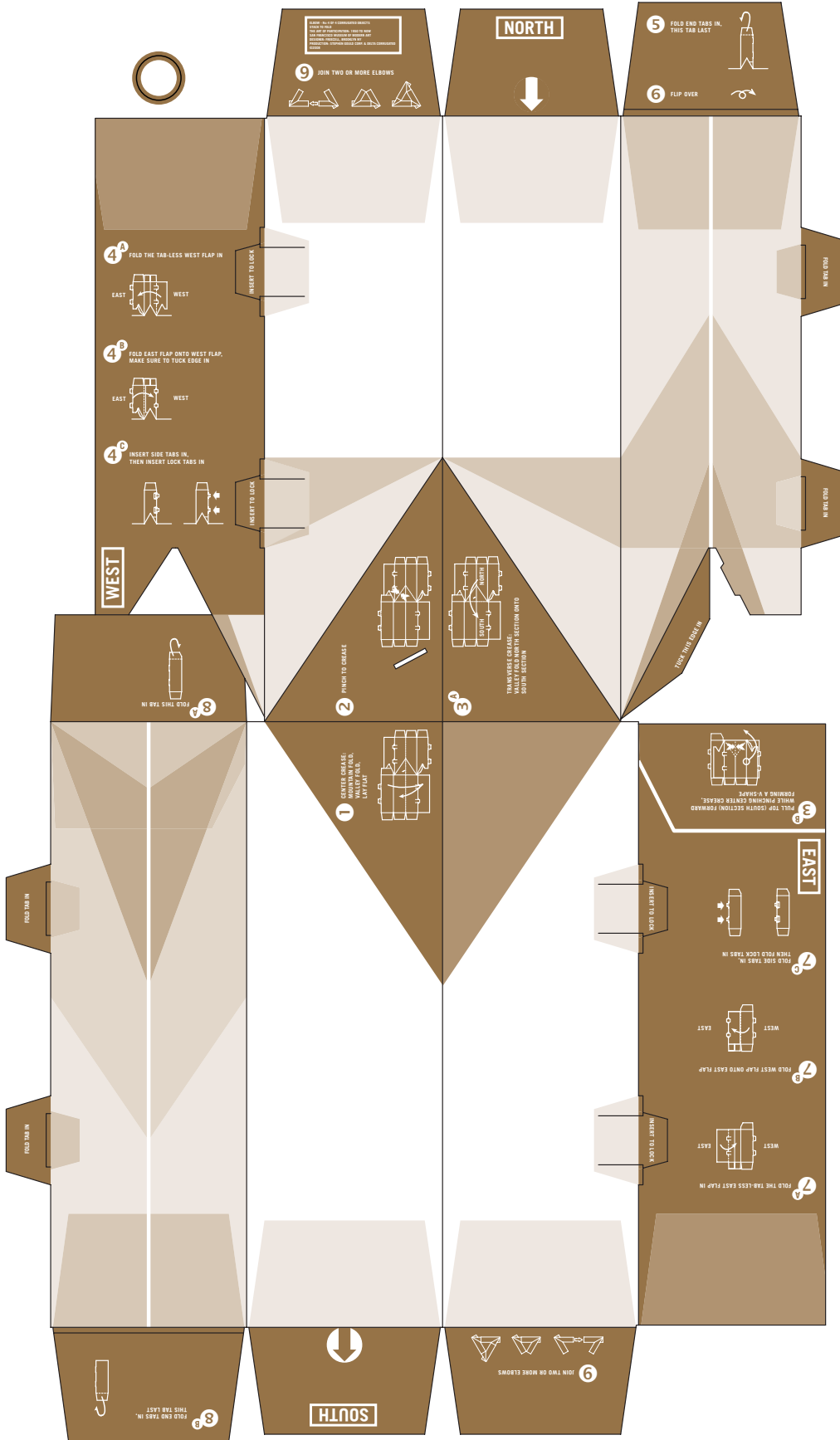


TABLE INSTRUCTIONS

- 1** RADIAL CREASE (3 LOCATIONS):
MOUNTAIN FOLD, VALLEY FOLD,
THEN LAY FLAT.
- 2** PINCH TO CREASE (4 LOCATIONS)
- 3A** FOR PYRAMID:
PULL CENTER UP
PULL SIDES TOGETHER
- OR**
- 3B** FOR INVERTED PYRAMID:
PUSH CENTER DOWN
PULL SIDES TOGETHER
- 4** BEST FOLD PANELS INWARD. EACH PANEL
SHOULD BE OPEN FOR ADJACENT PANEL
COLLAPSE (OR FORWARD). HOLD THE
PYRAMID DOWN INTO THE VOLUPE
CREATING A FLAT TOP SURFACE.
- 5** FOLD TABS IN
- 6** INSERT LOCK TABS
- 6** JOIN TWO UNITS TO MAKE A TABLE:
STACK INVERTED PYRAMID ON PYRAMID

FOLDING SYMBOLS

ELBOW



ELBOW INSTRUCTIONS

- 1 CENTER CREASE:** VALLEY FOLD. MOUNTAIN FOLD. LAY FLAT.
- 2 FINISH TO CREASE:** PULL TOP (SOUTH) SECTION FORWARD WHILE PINCHING CENTER CREASE. FORMING A V-SHAPE.
- 3 FOLD END TABS IN, THIS TAB LAST.**
- 4 FOLD THE TAB-LESS WEST FLAP IN.**
- 4 FOLD EAST FLAP ONTO WEST FLAP. MAKE SURE TO TUCK EDGE IN.**
- 4 FOLD THE TAB-LESS EAST FLAP IN.**
- 4 FOLD EAST FLAP ONTO WEST FLAP. MAKE SURE TO TUCK EDGE IN.**
- 4 INSERT SIDE TABS IN, THEN INSERT LOCK TABS IN.**
- 4 INSERT TO LOCK.**
- 4 FOLD END TABS IN, THEN INSERT LOCK TABS IN.**
- 4 FOLD THE TAB-LESS EAST FLAP IN.**
- 4 FOLD WEST FLAP ONTO EAST FLAP.**
- 4 FOLD SIDE TABS IN, THEN FOLD LOCK TABS IN.**
- 4 FOLD END TABS IN.**
- 4 FOLD END TABS IN.**

JOIN TWO OR MORE ELBOWS:

- 9 INSERT MIDDLE ONE ONTO THE WIDE END OF OTHER ELBOWS. TRY CONNECTING THEM TOGETHER AT HIGHER ANGLES FOR VARIATION.**
- 9 FOLD THEM TOGETHER.**

FOLDING SYMBOLS

	VALLEY FOLD		CREASE BY FIRST FOLDING AND THEN UNFOLDING
	MOUNTAIN FOLD		PINCH TO CREASE
	FLIP OVER		PULL FORWARD
	PINCH		FOLD BACK